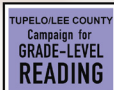


Lee county FAMILY Resource Guide

EARLY
CHILDHOOD
COALITION



ABOUT THE EARLY CHILDHOOD COALITION

The Early Childhood Coalition is a community-wide partnership in Tupelo/Lee County to ensure that all our children reach their full potential. This initiative began with a partnership between United Way of Northeast Mississippi and the CREATE Foundation and is the joining of Lee County Excel By 5 and the Tupelo/Lee County Campaign for Grade-Level Reading. The Coalition focuses on improving kindergarten readiness and third-grade reading proficiency.

Learn more at leecountyecc.org

FOR MORE INFORMATION

Contact Shelly Brooks, coalition director, at:

- 662-432-0170
- shelly@unitedwaynems.org

FOLLOW US



@leecountyecc

KEEP THIS GUIDE AS A HANDY REFERENCE

UPDATED 2024

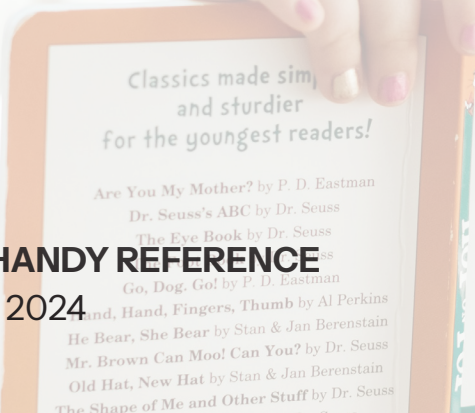
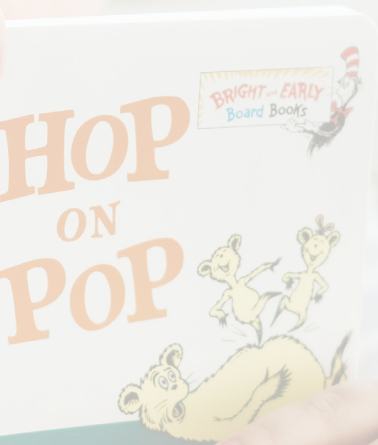


TABLE OF CONTENTS

QUICK REFERENCE	1
FAMILY AND PARENTING RESOURCES	2
ACTIVITIES AND ENRICHMENT	5
CHILD CARE AND PRESCHOOLS	7
EDUCATION	8
HEALTH	9
BASIC NEEDS AND EMERGENCIES	11



QUICK REFERENCE

United Way of Northeast Mississippi **662-841-9133**
United Way does not offer direct assistance but can refer individuals to partner agencies that may meet their needs.

Nurse Link® **662-377-3007**
Nurse Link is a free telephone health information service provided by North Mississippi Health Services. Callers speak directly to registered nurses who direct callers to the most appropriate medical treatment.

Poison Control **1-800-222-1222**
If your child has ingested a substance that you think might be poisonous, call Poison Control immediately.

Child Abuse Hotline **1-800-222-8000**
If you suspect a child is being abused physically, sexually, or verbally, call the Mississippi Child Abuse Hotline to make a report.

IN EMERGENCIES, DIAL 911.

Lee County Law Enforcement Non-Emergency Numbers

Lee County Sheriff’s Department	662-841-9040
Guntown Police Department	662-348-2208
Nettleton Police Department	662-963-1185
Plantersville Police Department	662-844-2012
Saltillo Police Department	662-869-5454
Shannon Police Department	662-767-8369
Tupelo Police Department	662-841-6491
Verona Police Department	662-566-2215

FAMILY AND PARENTING RESOURCES

Early Beginnings Resource Center

Contact: Early Childhood Education Center
662-840-5237
1402 North Green Street, Tupelo, MS 38804

Services: Books, toys, resource materials, workshops, Rosetta Stone program for English learners, Spanish language materials

Research & Referral Center at ICC Tupelo

Contact: 662-620-5370
2176 South Eason Boulevard, Tupelo, MS 38801

Services: Parenting resources and trainings, lending library of toys, books, games, and other resources for check-out

El Centro, Inc.

Contact: Leticia Gassaway, Director
662-610-0960
1800 West Main Street, Room 201, Tupelo, MS 38801

Services: After school services, English language practice, summer day programs, and resources in Spanish for Hispanic families

Interactive Therapies, LLC

Contact: 662-610-8578, 662-339-8163
131 Willowbrook Drive, Saultillo, MS 38866
amanda@interactivetherapiesllc.com

Services: Parent-Child Interaction Therapy (PCIT), a short-term, specialized behavior management program designed for young children experiencing behavioral and/or emotional difficulties and their families

Lee County La Leche League

Contact: Toni Hill, Chapter Leader
662-255-8283
1800 West Main Street, Tupelo, MS 38801

Services: Helps mothers who breastfeed through education, support, and encouragement

FAMILY AND PARENTING RESOURCES

MS Parent Training and Information Center & MS Coalition for Citizens with Disabilities

- Contact: 1-800-721-7255, 601-969-0601
2 Old River Place, Suite M, Jackson, MS 39202
mspti.org
- Services: Training, support, and resources for parents of children with disabilities

Northeast Mississippi Birthing Project

- Contact: 662-255-8283
1800 West Main Street, Suite 201D, Tupelo, MS 38801
- Services: Growing healthier families by providing friendship, education, and support during pregnancy and baby's first year of life

Project ChildSafe

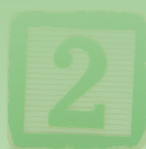
- Contact: Lee County Sheriff's Department
662-432-6200
510 Commerce Street, Tupelo, MS 38804
projectchildsafesafe.org
- Services: Fire arm safety information and free firearm safety kits available through the Lee County Sheriff's Office

Safe Kids Mississippi

- Contact: 601-984-1000
2500 North State Street, Jackson, MS 39216
safekids.org
- Services: Information on child safety, including car safety, home safety, product recalls, and more

Tupelo Fire Marshal's Office

- Contact: 662-841-6439
106 West Jefferson Street, Tupelo, MS 38804
- Services: Smoke detectors for at-risk households, fire station tours, fire safety and prevention demonstrations



FAMILY AND PARENTING RESOURCES

ONLINE RESOURCES

Vroom

Download the Vroom app at joinvroom.org or on your mobile app store. The app provides daily ideas of brain-building activities to do with your child.

HealthyChildren.org

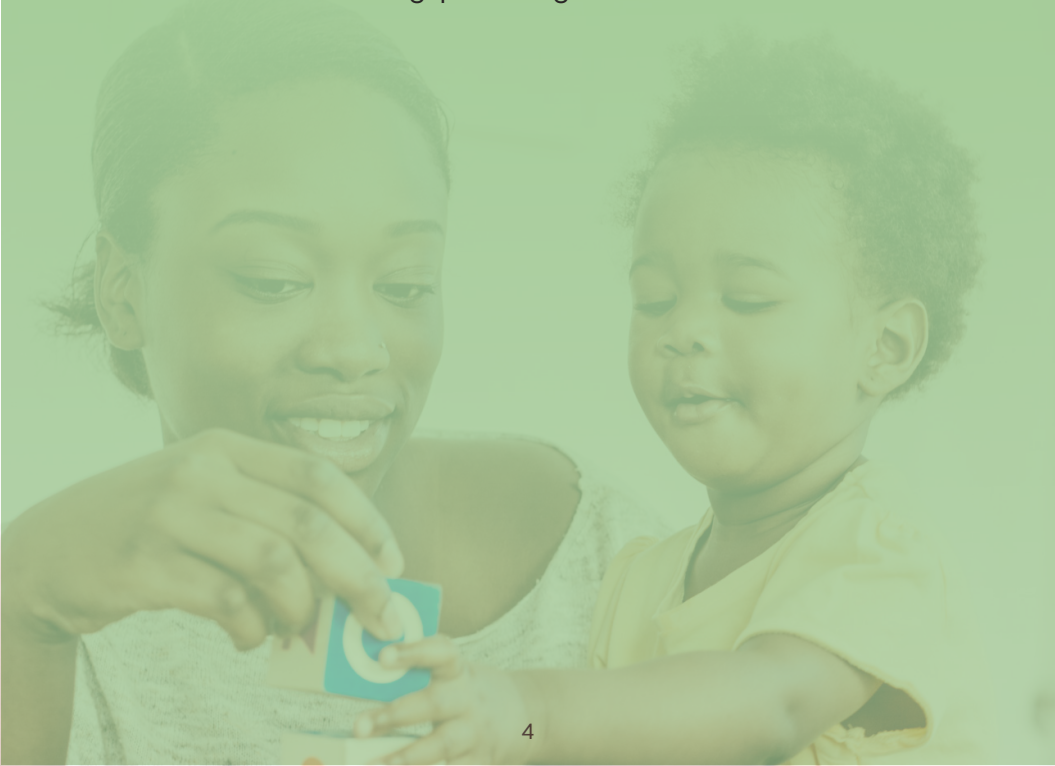
HealthyChildren.org is a parenting website provided by the American Association of Pediatrics. Resources cover such topics as healthy living, safety, family life, and developmental milestones by age.

Born Learning

The United Way Born Learning campaign “helps parents, grandparents and caregivers explore ways to turn everyday moments into fun learning opportunities.” Learn more at bornlearning.org.

Zero to Three

Zero to Three provides resources for parents and childcare providers to help them promote their children’s growth and development. Find these resources at zerotothree.org/parenting.



ACTIVITIES AND ENRICHMENT

These organizations offer activities and enrichment for children ages 0–8. Contact each organization for more information about their programs.

Downtown Tupelo Farmer's Market

Contact: 662-841-6598

South Spring Street by the railroad tracks
tupelomainstreet.com/farmers-market

Services: Locally grown fruits and vegetables, fresh flowers, plants, herbs, dairy products, breads, pies, cakes, pastries, pickles, jams, jellies, preserves, and smoked meats for sale Tuesday, Thursday, and Saturday mornings from 6:00 AM until the vendors sell out, May through October

Girl Scouts Heart of the South

Contact: 662-844-7577

P.O. Box 1087, 1140 West Main, Tupelo, MS 38802
girlscoutshs.org

Services: Delivers an informal, contemporary education program to girls, ages 5–18, with four main goals: to help each girl reach her own highest self-potential, to teach girls to relate to others with respect and understanding, to instill values and morals for decision making later in life, and to show each girl that she can make a difference in the lives of others through community service and involvement

Lee County Library

Contact: 662-841-9027, Bookmobile: 662-687-1520
219 North Madison Street, Tupelo, MS 38804
leeitawambalibrary.org

Services: Books, audio books, e-books, video collections, computers, weekly story time (Tuesdays at 10:00 AM), summer reading program, pre-school summer camp, bookmobile

ACTIVITIES AND ENRICHMENT

Oren Dunn City Museum

Contact: 662-841-6438
689 Rutherford Road, Tupelo, MS 38801 (in Ballard Park)
Facebook, Twitter, Instagram: @orendunnmuseum

Services: Museum tours offering information about the history of Tupelo and other subjects, Living History Day presentations, Dudie Burger Festival, and Dogtrot Rockabilly Festival

Party in the Art Room

Contact: 662-254-4130
1800 West Main Street, Tupelo, MS 38801
aekoonlaba@gmail.com
partyintheartroom.com

Services: Art lessons and creativity classes for children ages 4-14

Tupelo Macaroni Kid

Contact: tupelo.macaronikid.com
brandywatson@macaronikid.com

Services: With free weekly e-newsletters, Macaroni Kid provides a list of family-friendly events and activities. Subscribers are eligible for giveaways and special discounts from certain sponsors and events.

Tupelo Parks and Recreation

Contact: 662-841-6440
655 Rutherford Road, Tupelo, MS 38801 (in Ballard Park)
tupeloparksandrec.org

Services: Swimming, baseball, softball, soccer, tennis, day camp, Hershey's track & field, Challenger Sports, Special Olympics swimming, flag football, disc golf, volleyball, basketball, kickball, cheerleading



CHILD CARE AND PRESCHOOLS

The Mississippi Department of Health keeps an updated list of all licensed child care facilities by county. This list can be obtained by calling 601-364-2827 or by visiting msdh.ms.gov

PARTNER CHILDCARE CENTERS

- All God’s Children Child Care and Preschool
- Changing Lives Daycare
- Color My World Too
- Creative Minds Childcare & Learning Center
- Creative Minds Too
- Faye’s Playhouse and Learning Center
- Genesis Childcare & Learning Center
- Happy Feet Daycare & Learning Center
- Haven Acres Head Start
- In His Hands Childcare & Learning
- It’s a Small World
- Journey Kids Early Childhood Learning Center
- Kiddie Kastle Preschool
- Kids Landing Child Care and Learning Center
- Kids Landing Too
- Kids’ World
- Little Angels Learning and Child Care Center
- North MS Medical Center Child Care Center
- Northside Head Start
- Precious Hands Day Care and Learning Center
- Shannon Head Start
- Verona Head Start

Mississippi Child Care Payment Program

Contact: 1-800-877-7882
P.O. Box 352, Jackson, MS 39205
childcareinfo.ms

Services: The Mississippi Child Care Payment Program is a federally funded program designed to provide eligible parents assistance with child care costs.

MOTHER’S DAY OUT PROGRAMS

Calvary Baptist Mother’s Day Out

Contact: 662-842-3338
501 West Main Street, Tupelo, MS 38804

Services: MDO on Thursdays from 9:00 AM-1:00 PM and noon-4:00 PM

Harrisburg Baptist Mother’s Day Out

Contact: 662-842-6917
4675 Cliff Gookin Boulevard, Tupelo, MS 38801

Services: MDO on Mondays and Thursdays from 8:30 AM-1:30 PM

EDUCATION

PUBLIC SCHOOLS

Lee County Schools

662-841-9144

1280 College View Drive, Tupelo, MS 38804

leecountyschools.us

Tupelo Public School District

662-841-8850

P.O. Box 557, Tupelo, MS 38802

tupeloschools.com

Baldwyn School District

662-365-1000

107 West Main Street, Baldwyn, MS 38824

baldwynschools.com

Nettleton School District

662-963-2151

179 Mullen Avenue, Nettleton, MS 38858

nettletonschools.com

HEAD START PROGRAMS

For information on Head Start programs in Lee County, contact:

662-690-9381

1830-B North Gloster Street, Tupelo, MS 38804

mapheadstart.org

PRIVATE SCHOOLS

Lakeview Baptist Academy

662-842-4005

830 Shumacola Trail, Tupelo, MS 38801

lakeviewbaptisttupelo.com

Tupelo Christian Preparatory School

662-844-8604

5440 Endville Road, Belden, MS 38826

tcps.net

HEALTH

Autism Center of North Mississippi

- Contact: 662-840-0974
146 South Thomas Street, Suite E, Tupelo, MS 38801
autismcenternms.com
- Services: Therapy for children with autism, developmental delays, learning difficulties, and challenging behaviors and training for parents and educators

CATCH Kids

- Contact: 662-377-2194
catch-kids.org
- Clinics: 1616 North Green Street, Apt. 3, Tupelo, MS 38804
3288 Willie Moore Road, Tupelo, MS 38801
- In-school: Milam Elementary, Verona Elementary, Plantersville Middle School
- Services: Makes comprehensive, high quality medical and dental care accessible and available to children birth to 18 years who have trouble getting needed care

Early Intervention Program (First Steps)

- Contact: 662-680-4922
532 South Church Street, Tupelo, MS 38804
- Services: First Steps matches the unique needs of infants and toddlers (up to age 3) with developmental delays with professional resources within the community

Health Connect

- Contact: 662-539-7171, Crisis Line: 1-877-427-2402
109 Desert Cove, Suite D, Saltillo, MS 38866
healthconnectamerica.com
- Services: Provides counseling, therapy, and intensive outpatient services for at-risk youth and families and support for grief, anger management, family crisis, and substance abuse

Lee County Health Department

- Contact: 662-841-9096
532 South Church Street, Tupelo, MS 38804
healthyms.com
- Services: Offers WIC food program, childhood vaccinations, and Early Intervention/First Steps screenings

HEALTH

Living Independence for Everyone (LIFE) of Mississippi

- Contact: 662-844-6633
1051 Cliff Gookin Boulevard, Tupelo, MS 38801
lifeofms.com
- Services: LIFE offers independent living services to individuals with disabilities including information and referral, peer support, advocacy, skills training, and transition

Medicaid Regional Office – Lee County

- Contact: 662-844-5304
1742 McCullough Boulevard, Tupelo, MS 38801
- Services: Medicaid for pregnant women and children and the Children's Health Insurance Program (CHIP)

Northeast MS Down Syndrome Society

- Contact: 662-791-9265
193 Westwood Circle, Saltillo, MS 38866
nemdss321@gmail.com
- Services: Provides support, information, and resources for families of children with Down Syndrome and hosts the Buddy Walk every October

Regional Rehabilitation Center

- Contact: 662-842-1891
615 Pegram Drive, Tupelo, MS 38801
regionalrehabcenter.com
- Services: Provides speech/language therapy, physical therapy, occupational therapy, dyslexia services, and early intervention services to all ages in a long-term outpatient, therapeutic rehabilitation center. Services are provided at no charge to the client or insurance company until maximum benefit is received .

Tree of Life (Arbol de la Vida) Free Clinic

- Contact: 662-841-8777
541 West Main Street, Tupelo, MS 38801
- Services: "First come, first served" medical and dental clinic held the first Wednesday of the month at 4:30 PM and third Saturday of each month at 9:00 AM for patients not covered by Medicare, Medicaid, or private insurance, regardless of residency

BASIC NEEDS AND EMERGENCIES

American Red Cross, North Mississippi Chapter

Contact: 662-842-6101
4127 Westside Drive, Tupelo, MS 38801

Services: Provides assistance to victims of disasters, service to military personnel and families, and educational courses

Emmanuel Church of God in Christ Food Pantry

Contact: 662-488-7419, 662-844-1902, 662-231-8816
1203 North Green Street, Tupelo, MS 38804
emmanuelcogic.net

Services: Food pantry, open fourth Saturday of each month from 9:00 AM to noon

F.A.I.T.H. Food Pantry (Food Available in This House)

Contact: 662-767-3306, 662-401-2958
102 Front Avenue, Nettleton, MS 38858
nettfaithfoodpantry.com

Services: Food pantry, open third Saturday of each month from 8:00 to 10:00 AM. Emergency boxes available Wednesdays from 11:00 AM to noon.

Helping Hands

Contact: 662-690-8100
314 South Church Street, Tupelo, MS 38804
fumctupelo.com

Services: Provides food and clothing once per month for eligible clients, Saturdays from 9:00 to 11:00 AM

Lee County Department of Human Services (DHS)

Contact: 662-841-9050
220 South Industrial Road, Suite A, Tupelo, MS 38801

Services: Programs such as Temporary Aid to Needy Families (TANF), Supplemental Nutrition Assistance Program (SNAP), and child support enforcement

LIFT, Incorporated

Contact: 662-842-9511
2577 McCullough Boulevard, Tupelo, MS 38801

Services: Provides assistance with a variety of household needs such as utility bills, rent, and tools needed for employment

BASIC NEEDS AND EMERGENCIES

S.A.F.E., Inc. (Shelter and Assistance in Family Emergencies)

Contact: 662-841-9138, 1-800-527-7233
P.O. Box 985, Tupelo, MS 38802
safeshelter.net

Services: Provides shelter and counseling for domestic violence and sexual assault victims and services for the homeless

St. Luke United Methodist Food Pantry

Contact: 662-687-4500
2653 Eason Boulevard, Tupelo, MS 38801

Services: Food pantry, open each Thursday from 8:00 AM to noon

Saints' Brew at All Saints' Episcopal Church

Contact: 662-842-4386
608 West Jefferson Street, Tupelo, MS 38804

Services: Hot breakfast served Monday through Friday from 7:00 to 8:30 AM

Tennessee Valley Regional Housing Authority (TVRHA)

Contact: 662-869-5751
122 Pinewood Street, Saltillo, MS 38866

Services: Assisted housing for individuals, elderly, persons with disabilities, and families

The Salvation Army

Contact: 662-842-9222
527 Carnation Street, Tupelo, MS 38801

Services: Provides the minimum necessities of life, such as emergency food, shelter, utilities, clothing, and medicine, on a crisis intervention basis. Lunch and dinner served Monday through Friday.

Tupelo Housing Authority

Contact: 662-841-0006
1624 North Green Street, Tupelo, MS 38804
tupha.org

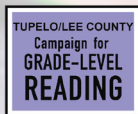
Services: Low-income public housing

Women, Infants, and Children Food Program (WIC)

Contact: 662-841-9096
532 South Church Street, Tupelo, MS 38804

Services: Food program for pregnant, breastfeeding, and post-partum women, infants, and children under five years

EARLY CHILDHOOD COALITION



leecountyecc.org



@leecountyecc